



VACUUM COATING
GLASS DECORATION EXPERTS

GLASS KNOW-HOW

Kolzer designs and produces Vacuum Coating Machines in Milan, **since 1952**.

Today Kolzer occupies a strong and consolidated leadership in the European and world market, proven by the presence of **over 1 200 plants**, and more than **300 for glass coating**.

KOLZER produces a complete range of machinery, offering several types of processes: **Metallization, Sputtering, Iride, Plasma, PECVD**.



OUR GLASS PROCESSES



66 YEARS OF EXPERTISE



Why is a base varnish applied?

- To level the surface of the substrate.
- To adhere the metal to the substrate.
- To highlight the shine of the deposited metal.

Why is a protective varnish applied?

- To protect metal layer.
- To prevent the metal from rusting.
- To highlight the shine of the metal.
- To strengthen the properties and resistance of the finished object.
- To offer great range of metallic colours tones and finishes.

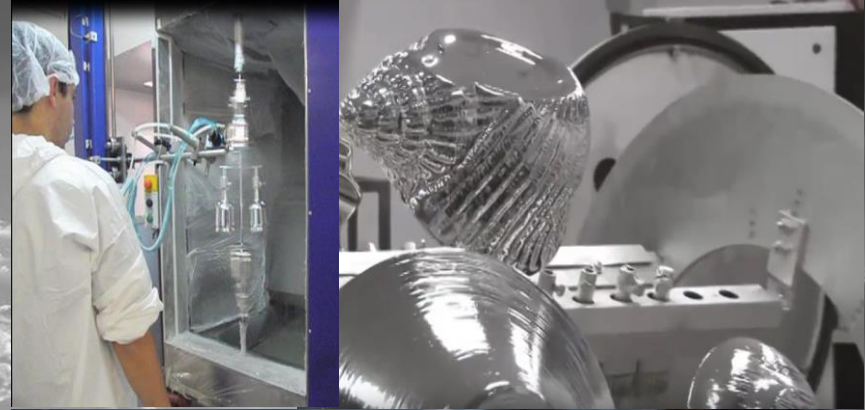
What kind of varnishes are there?

- Heat Cured
- Cured by ultra violet light (UV)

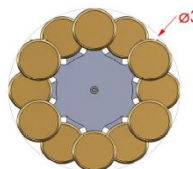
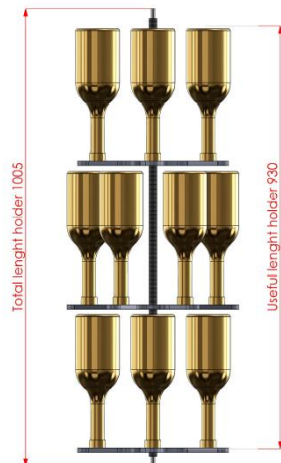
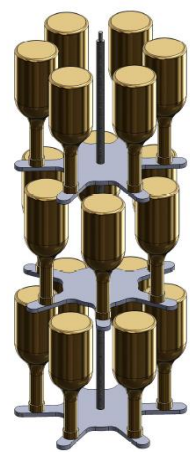
How is varnish selected?

- Type of substrate.
- Desired finish and resistance.

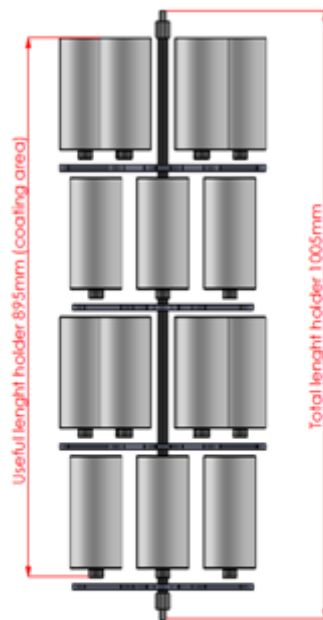
ECOFRIENDLY
we are worldwide
leader in glass
decoration solutions



HIGH CAPACITY

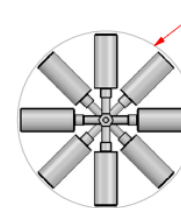
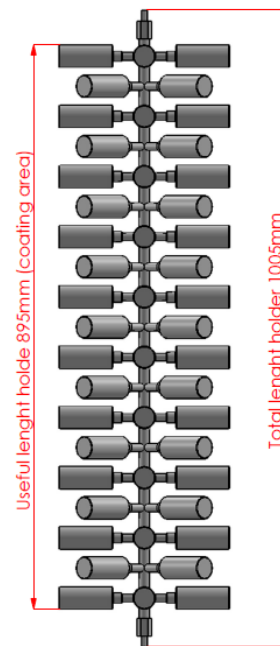


MK63"
Total loading capacity:
-5 cycles/h
-720 pcs/h



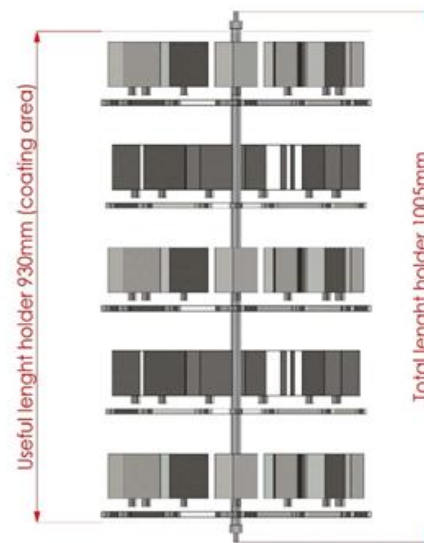
24	8	192
QTY/JIG	JIG	QTY/CYCLE

MK63"
Total loading capacity:
-5 cycles/h
-960 pcs/h

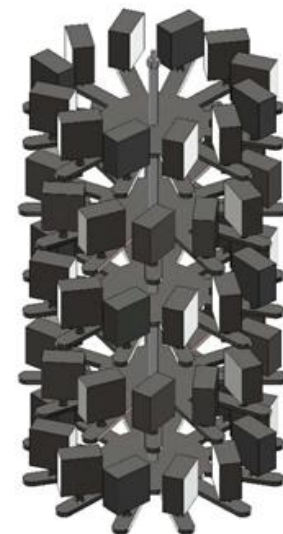


MK63"
Total loading capacity:
-5 cycles/h
-4560 pcs/h

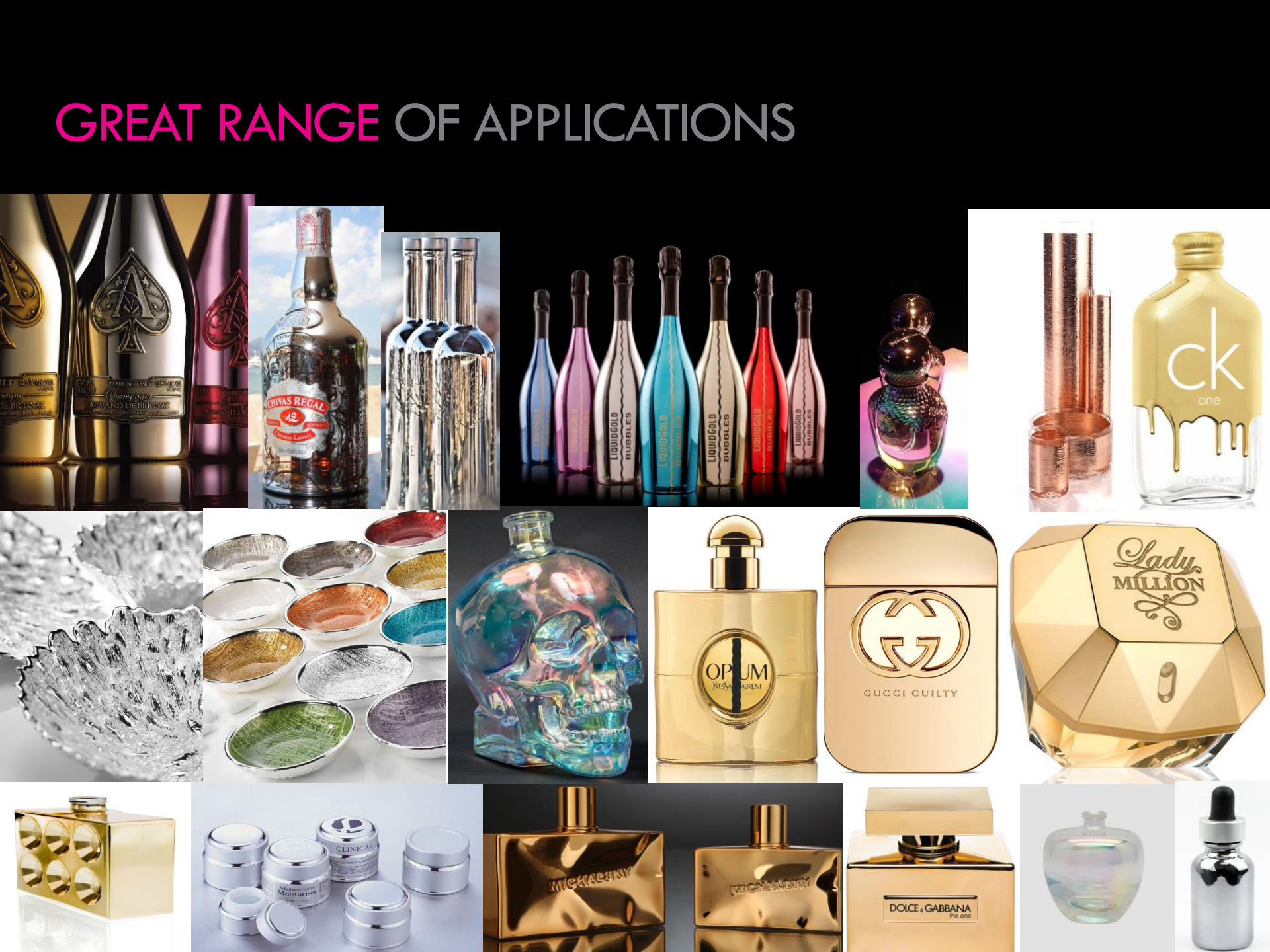
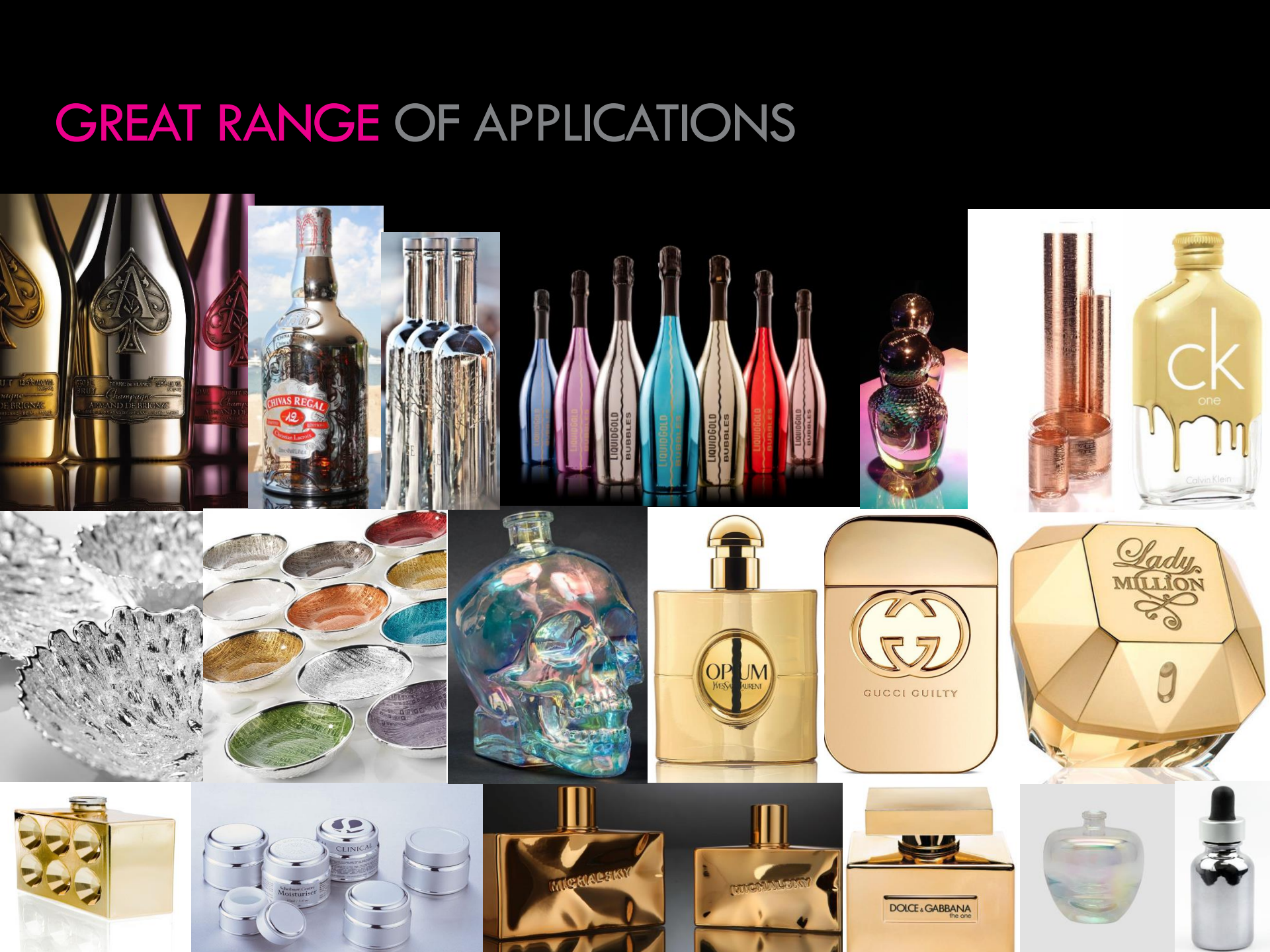
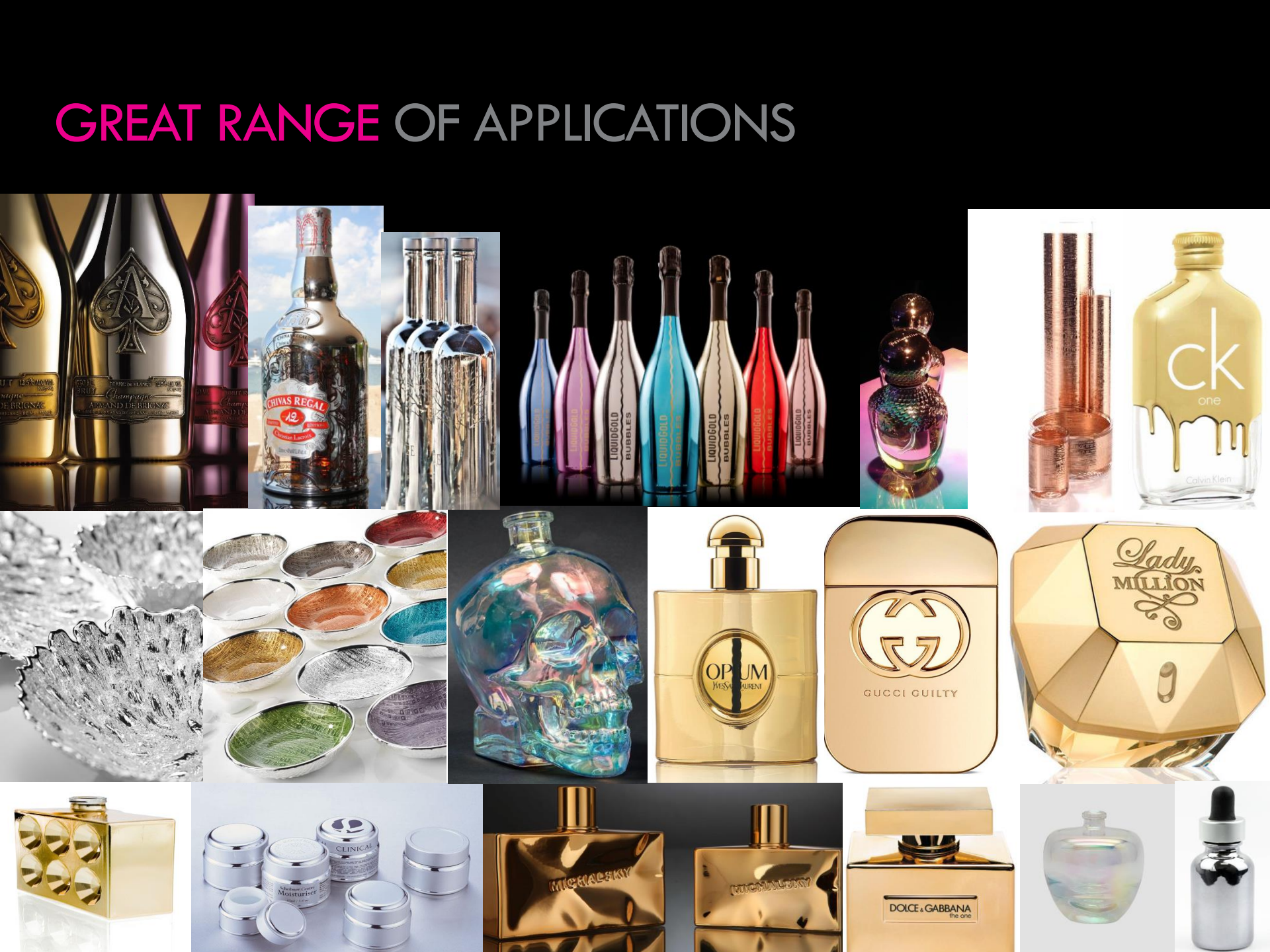
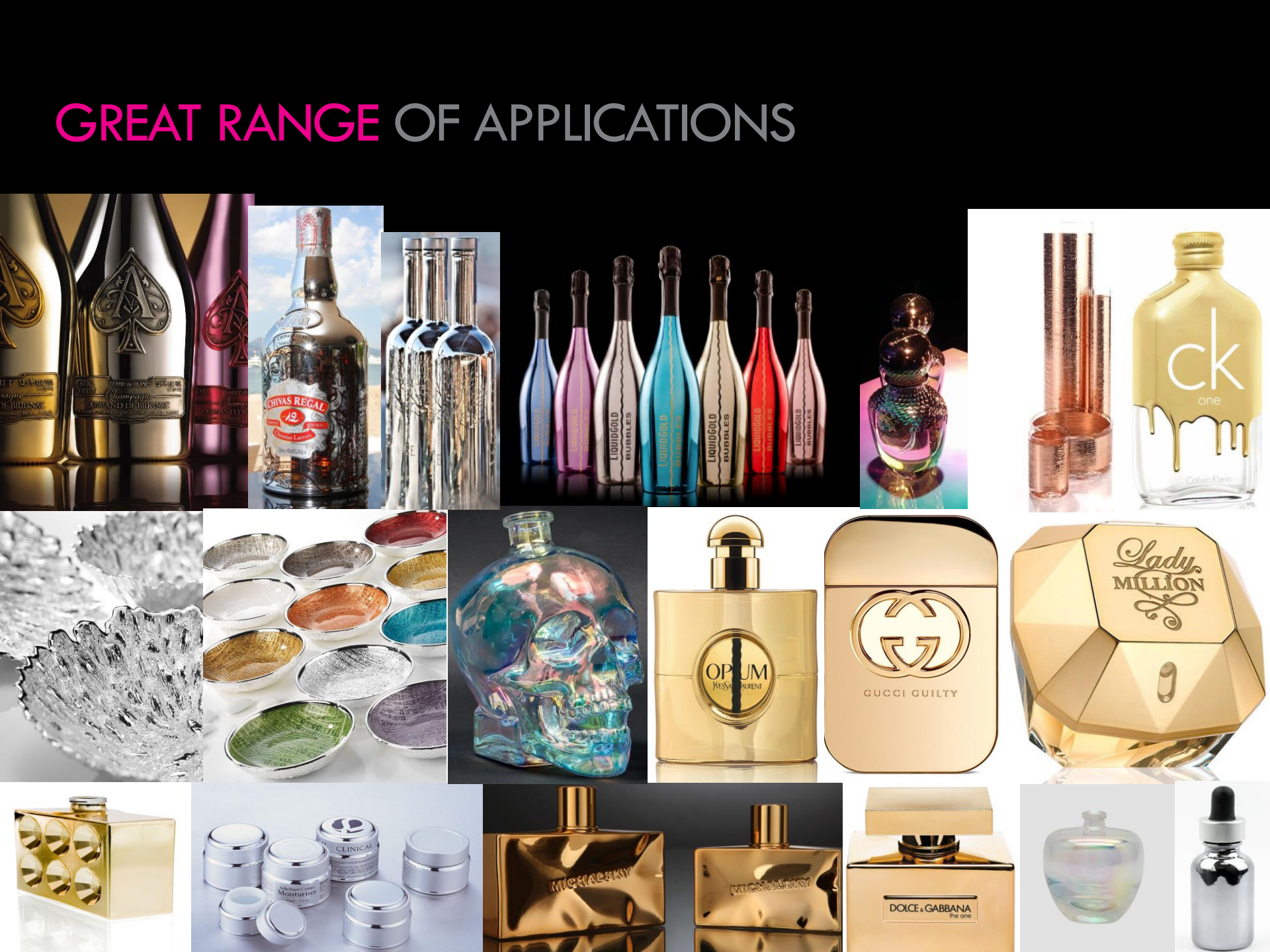
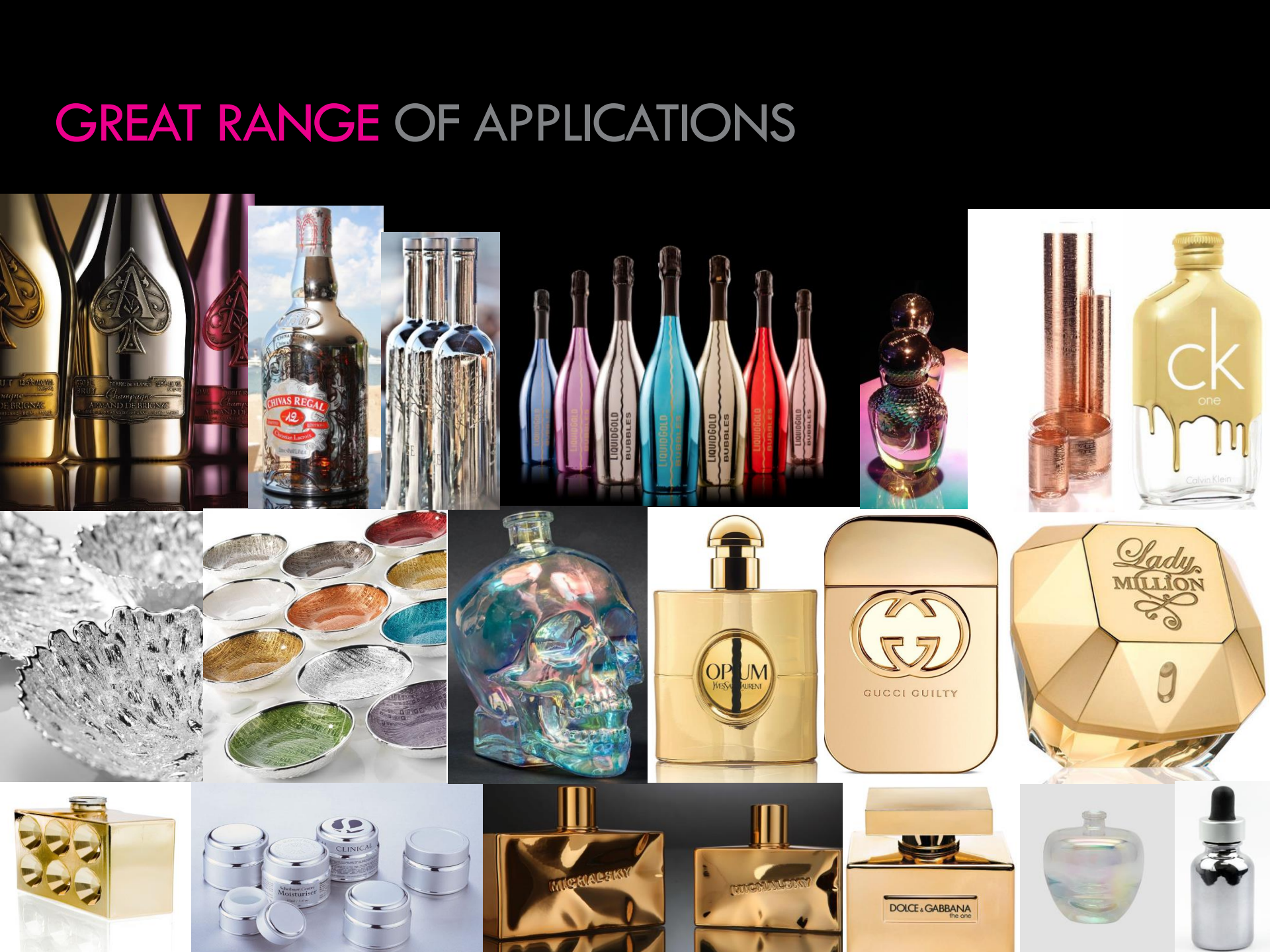
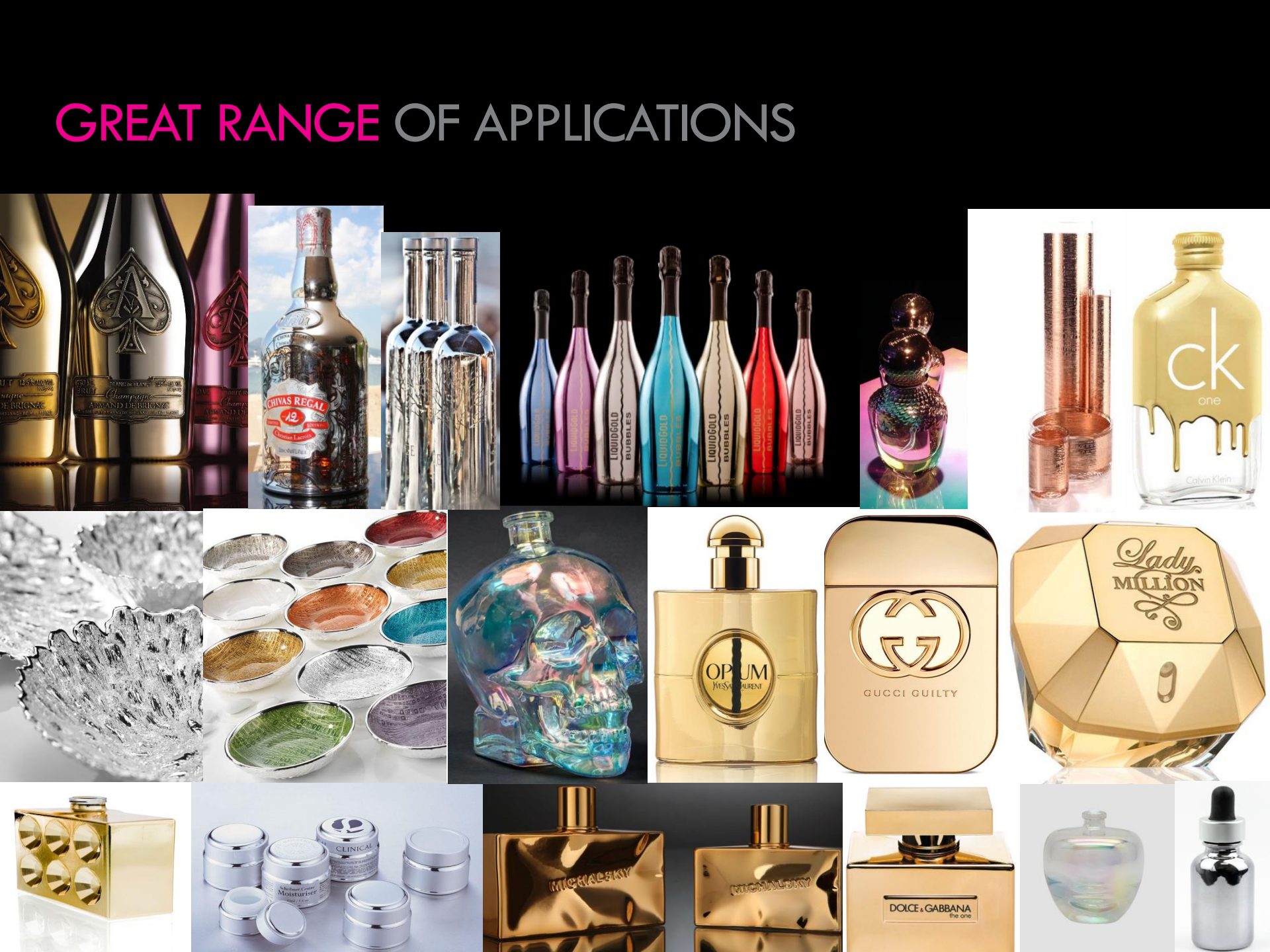
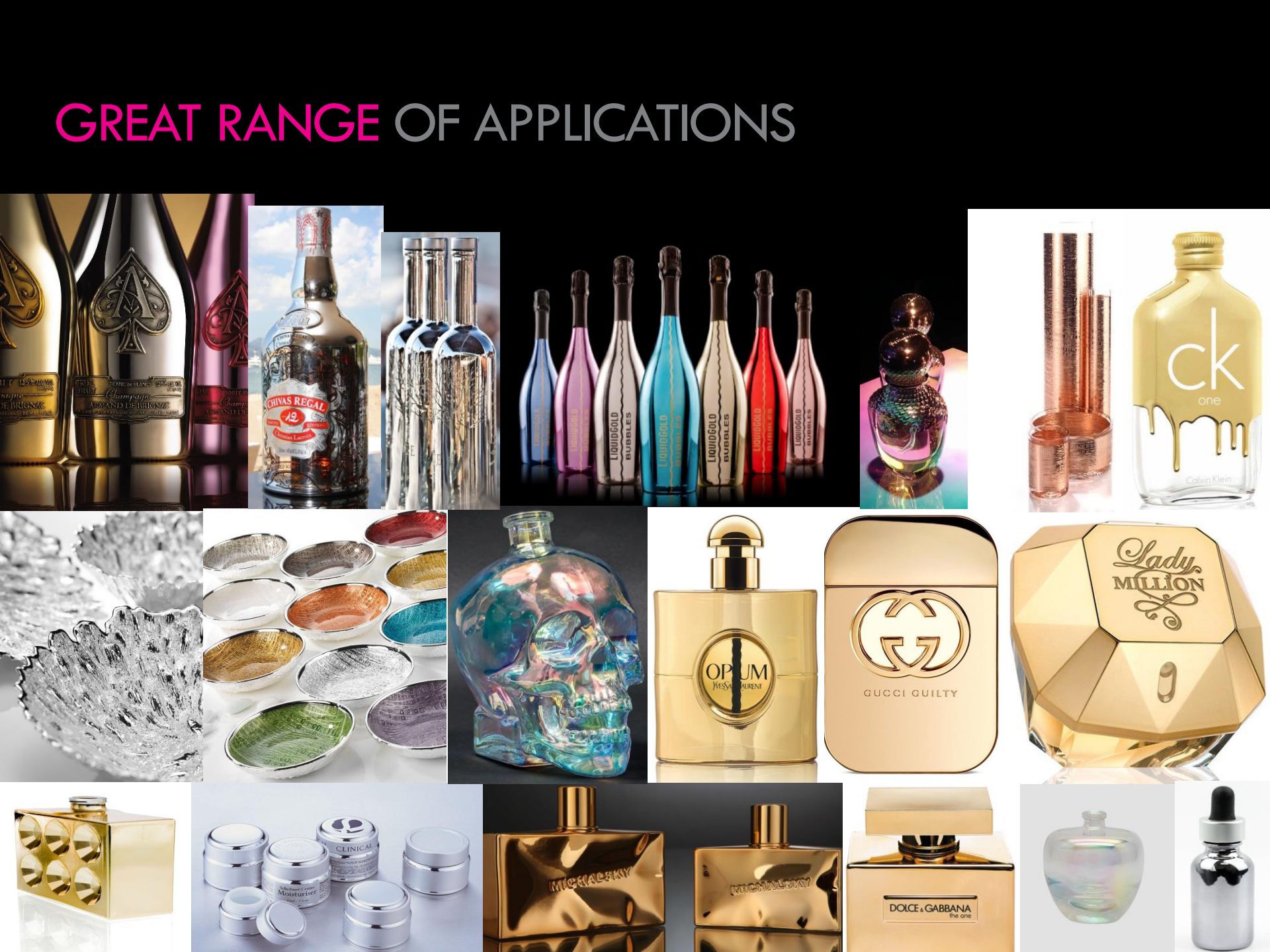
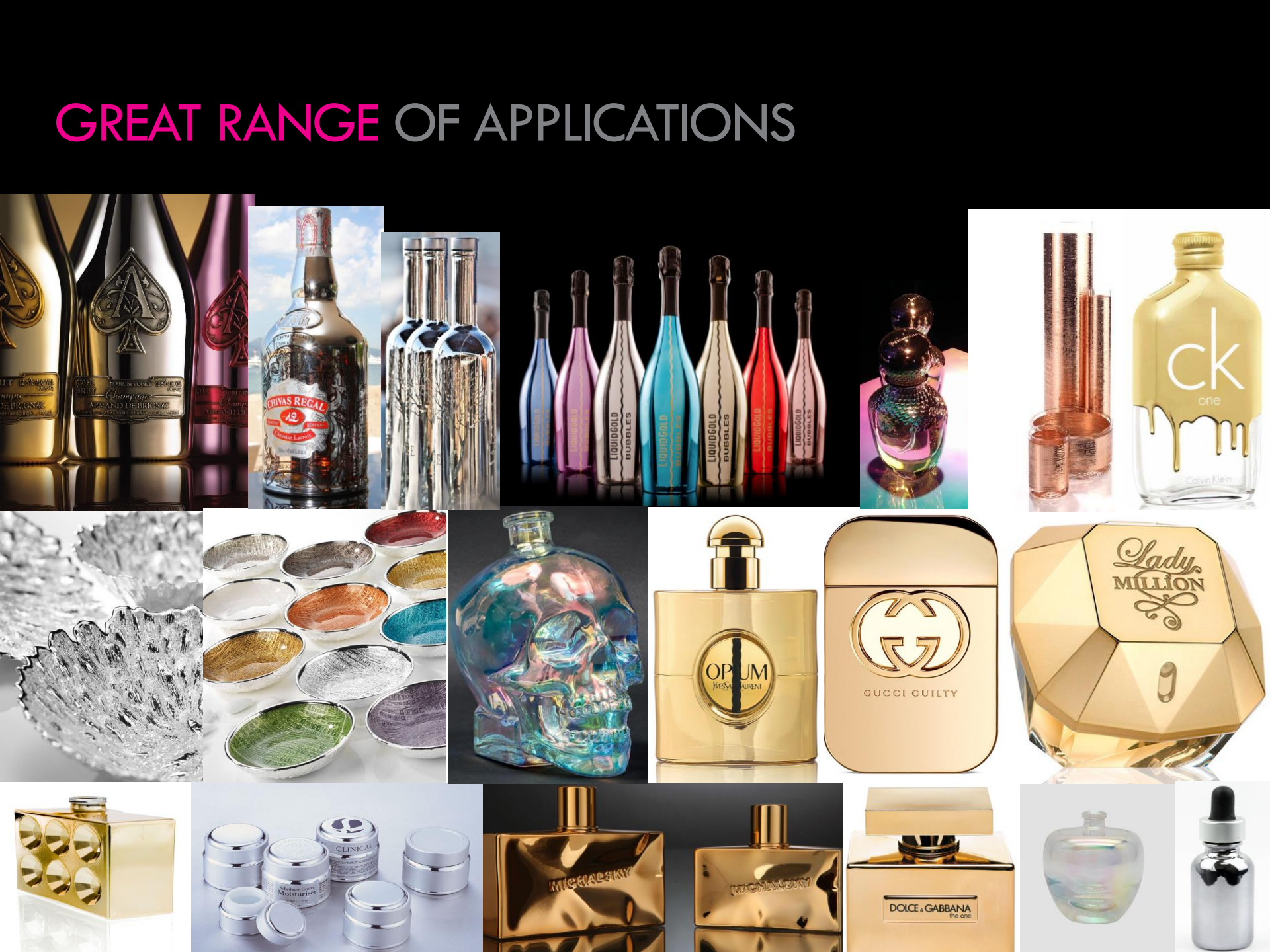
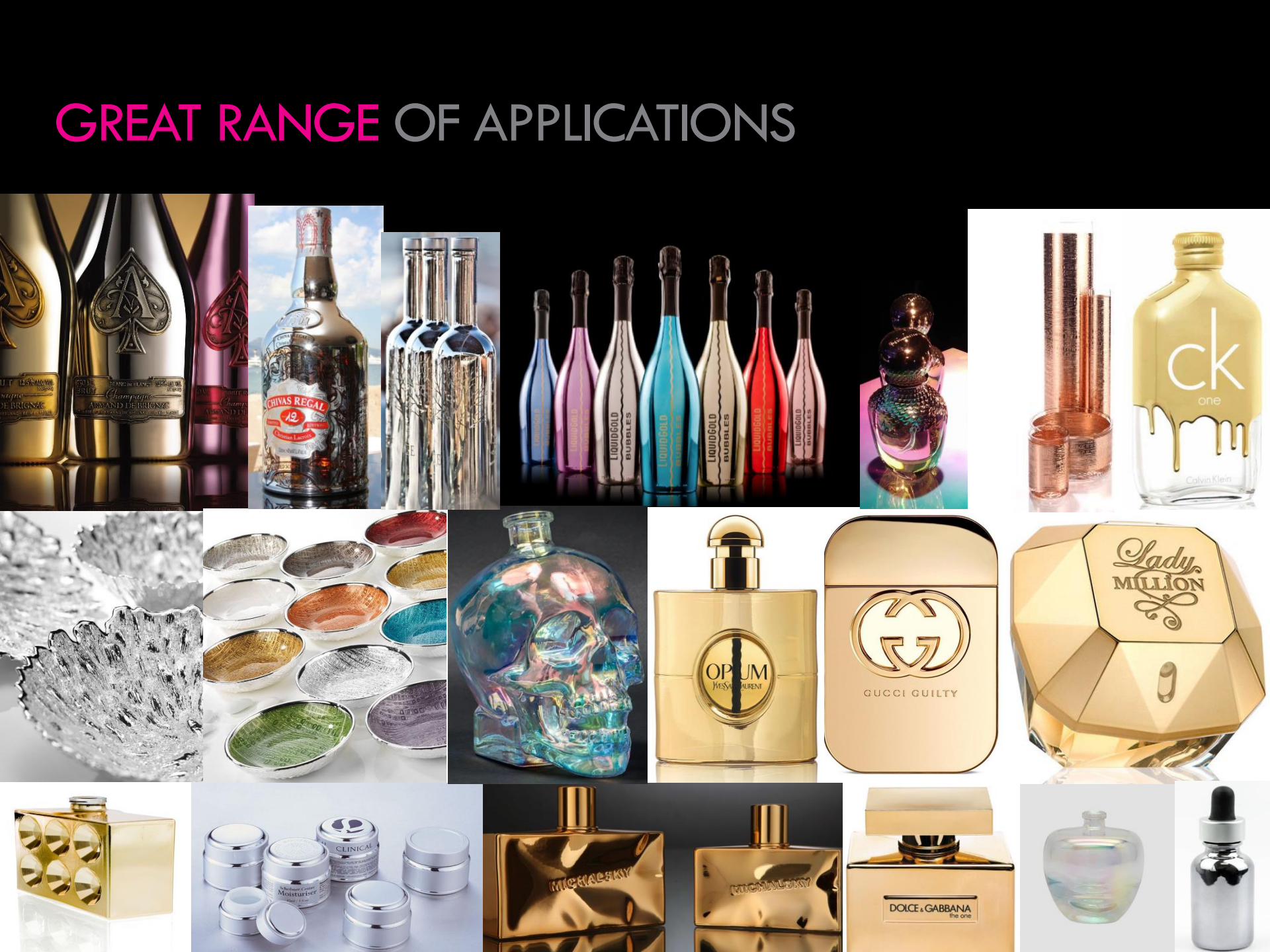
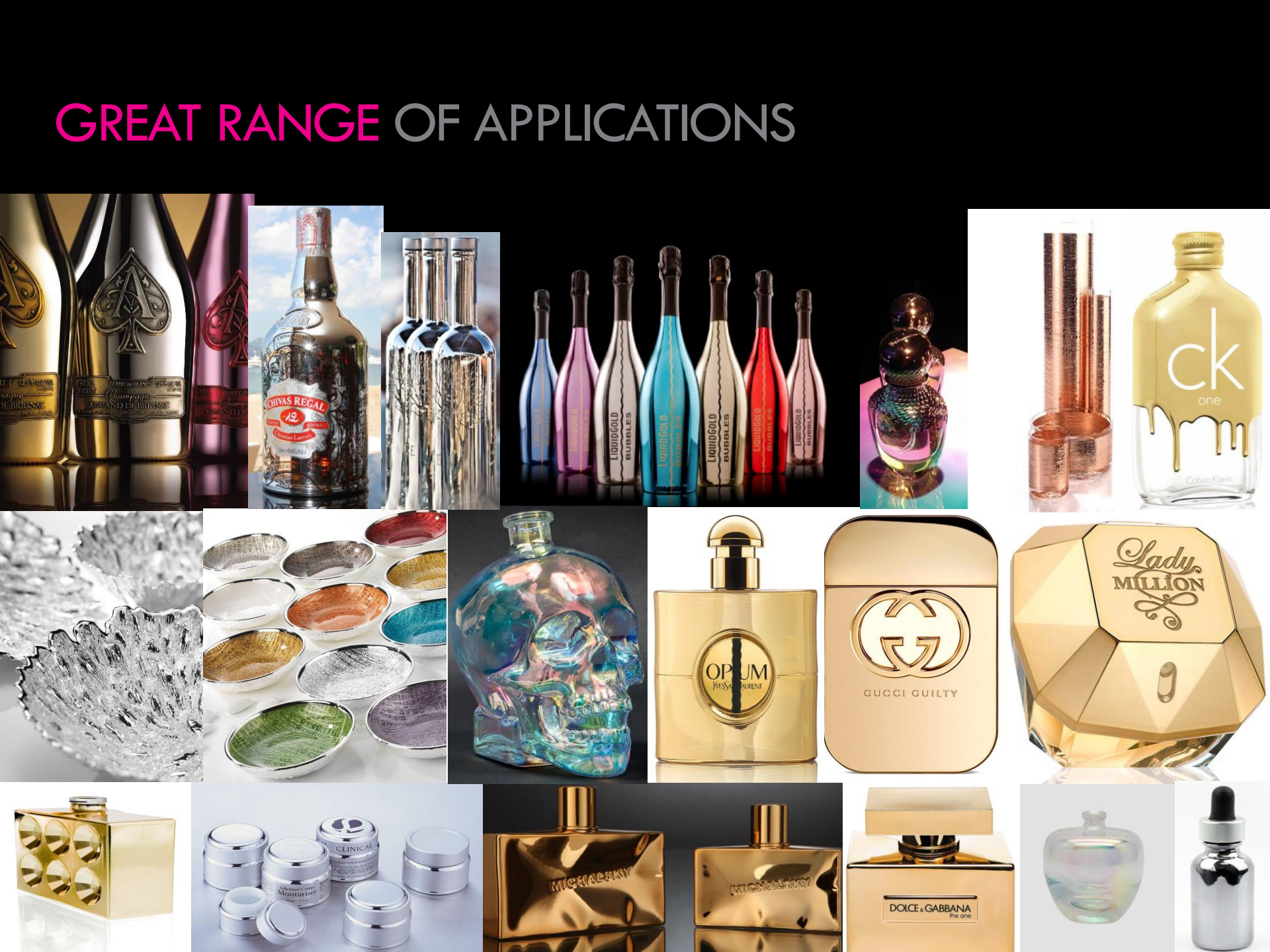
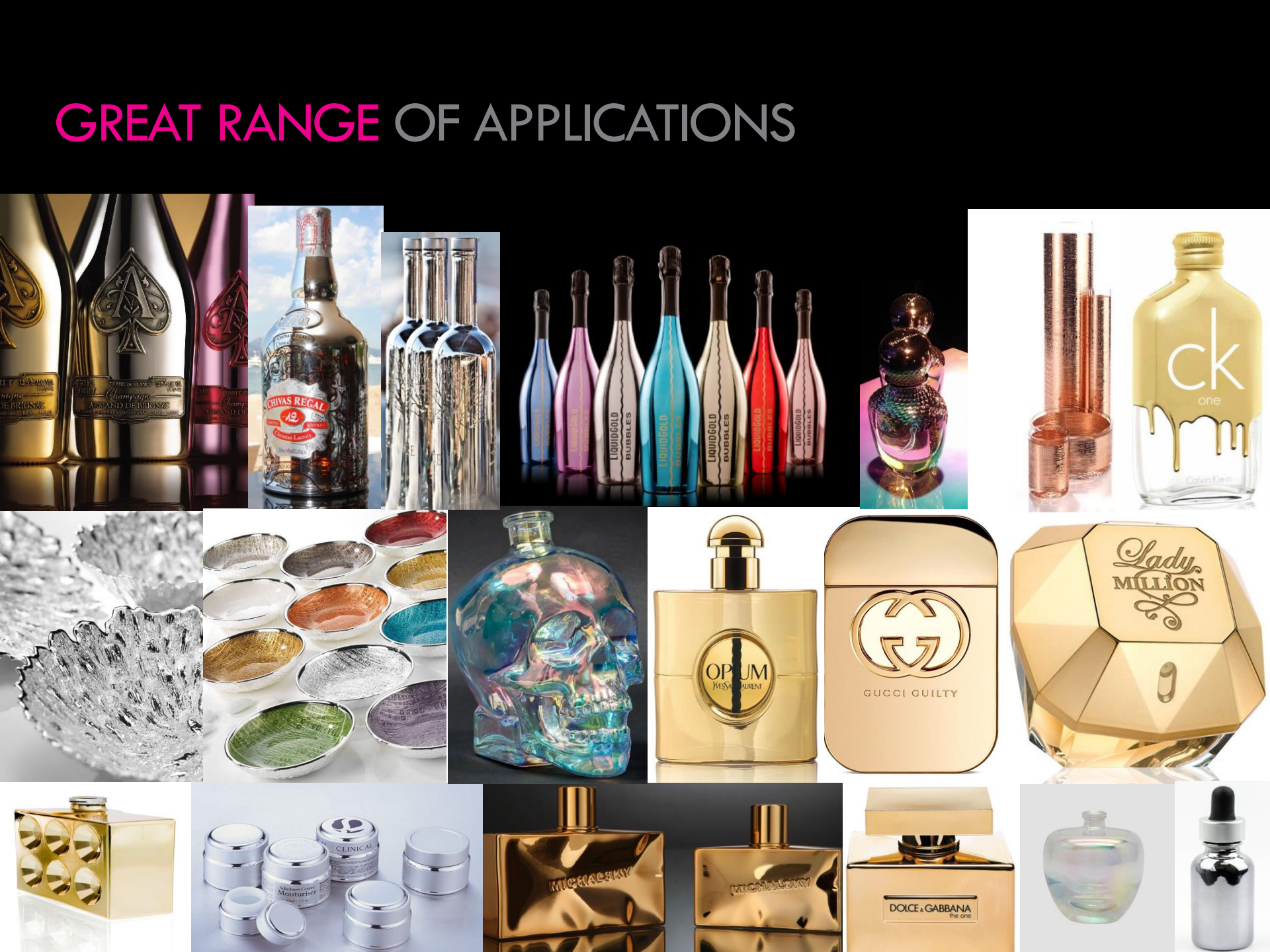
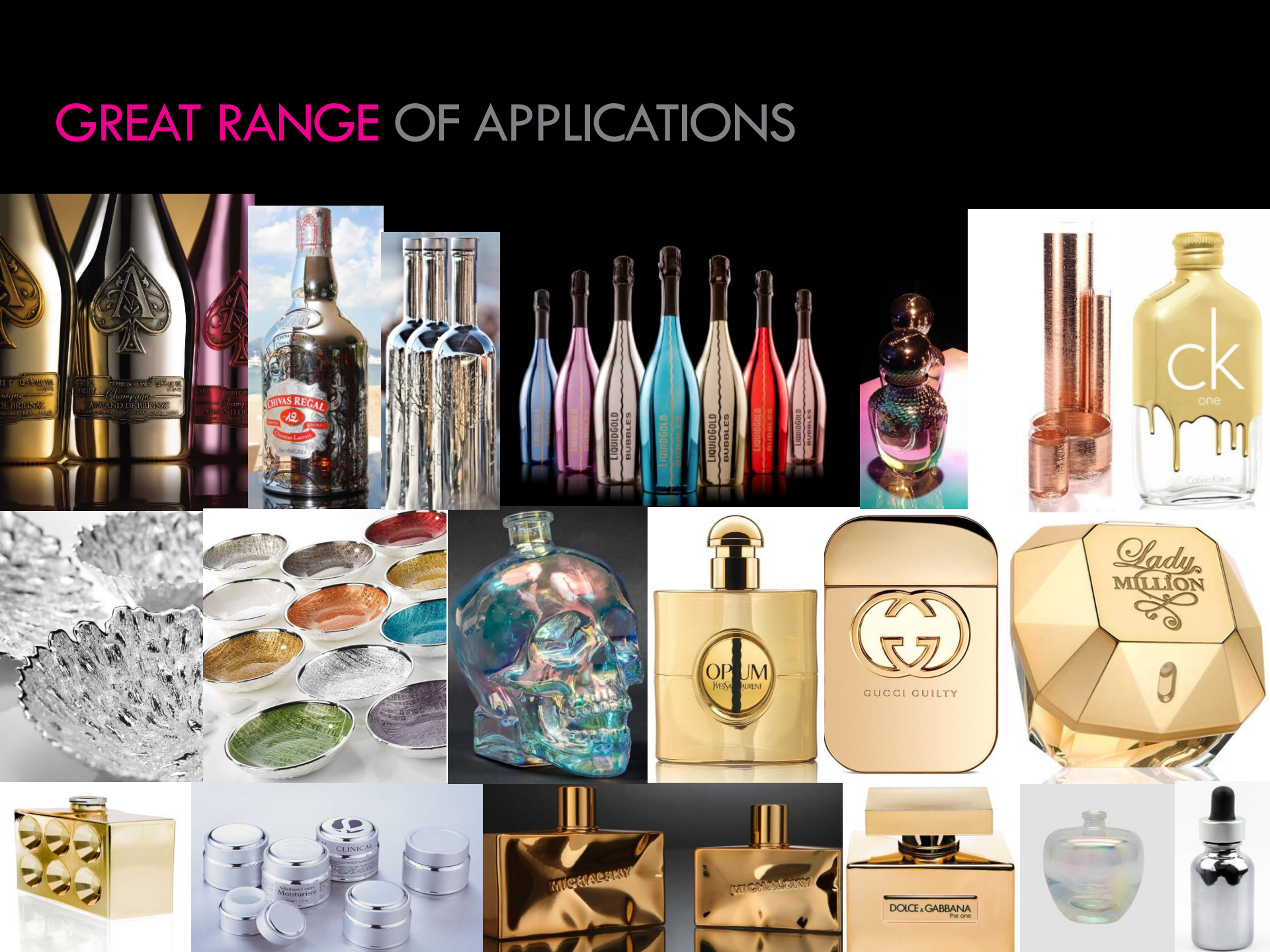
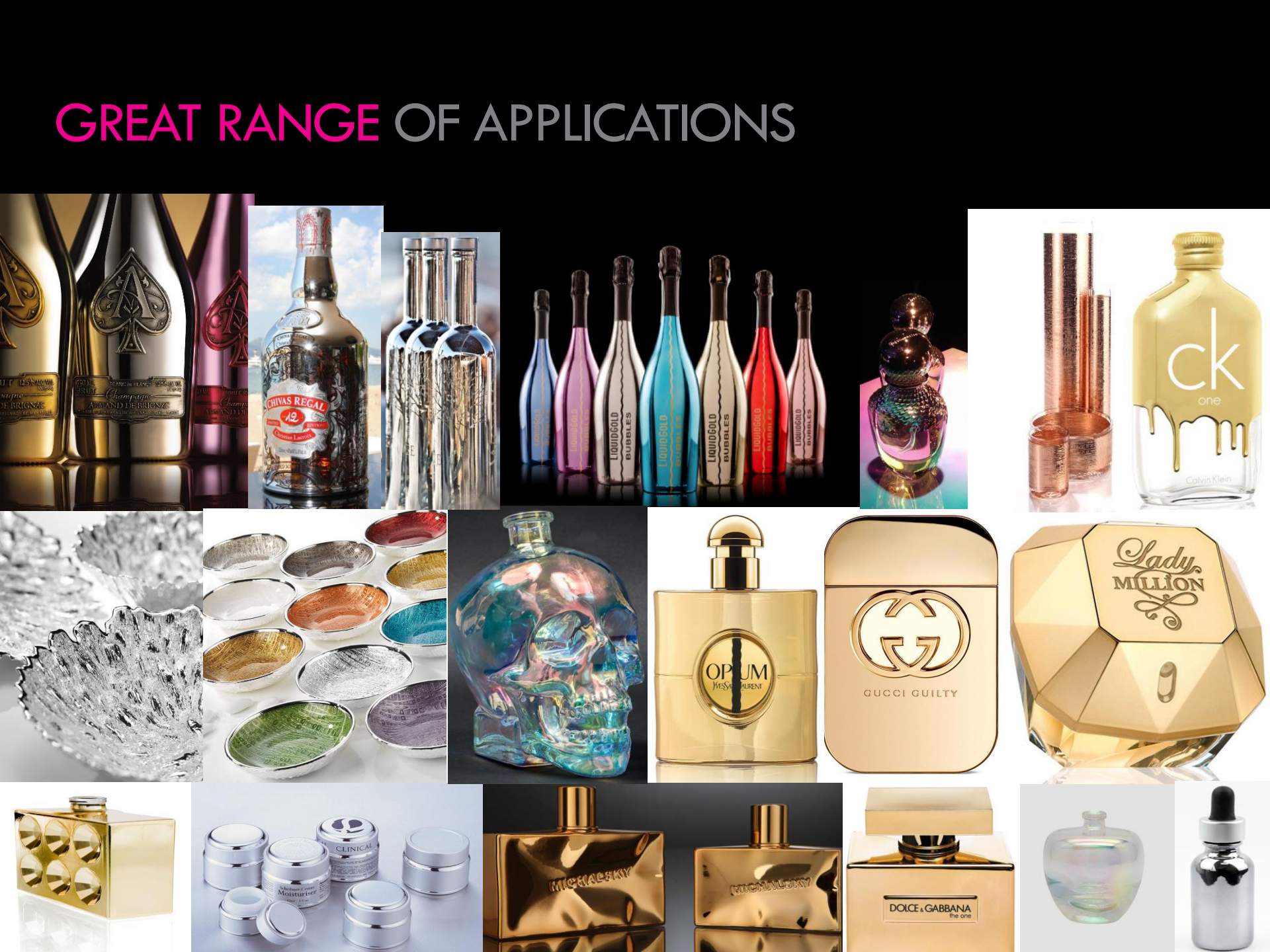
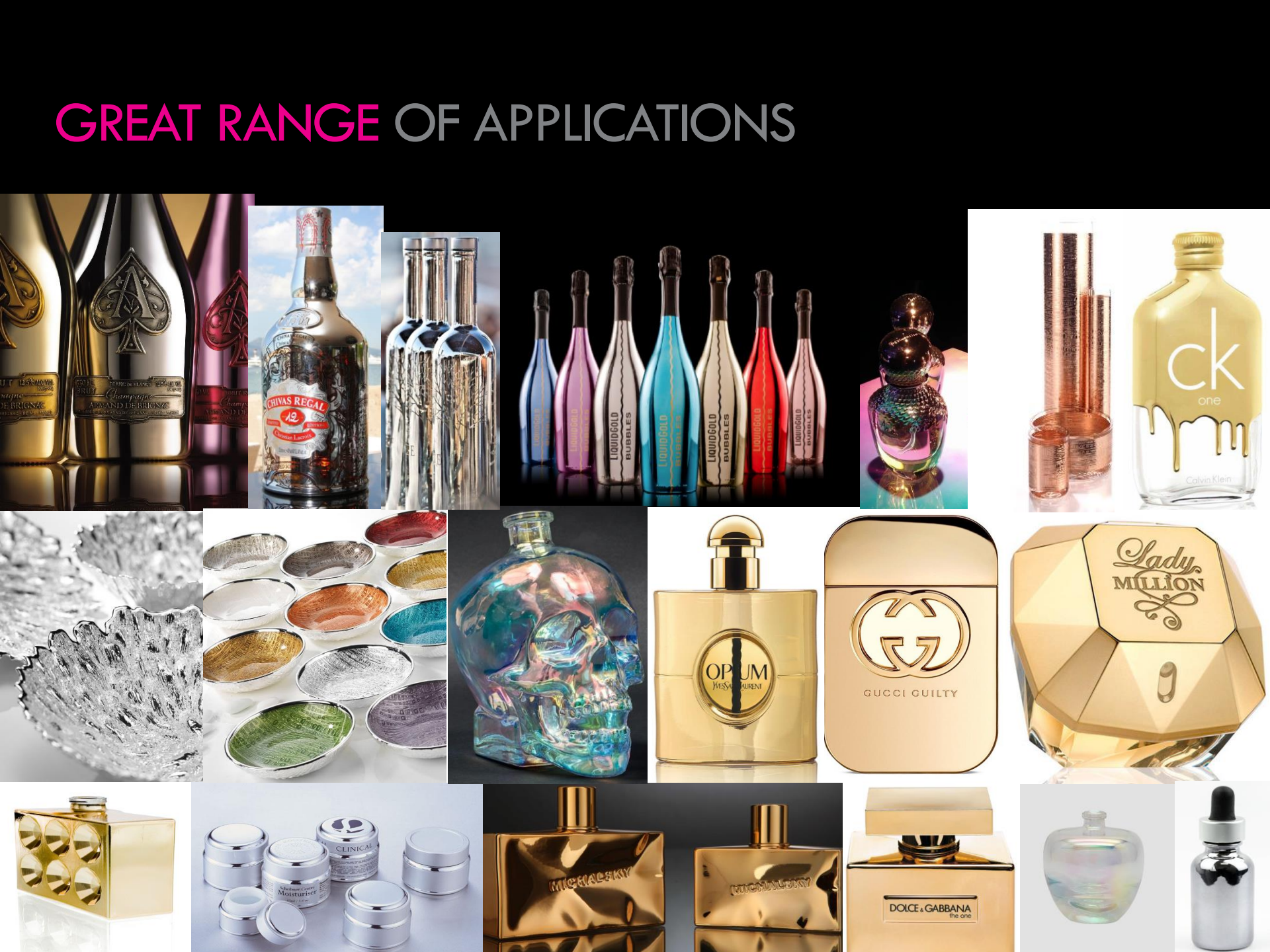
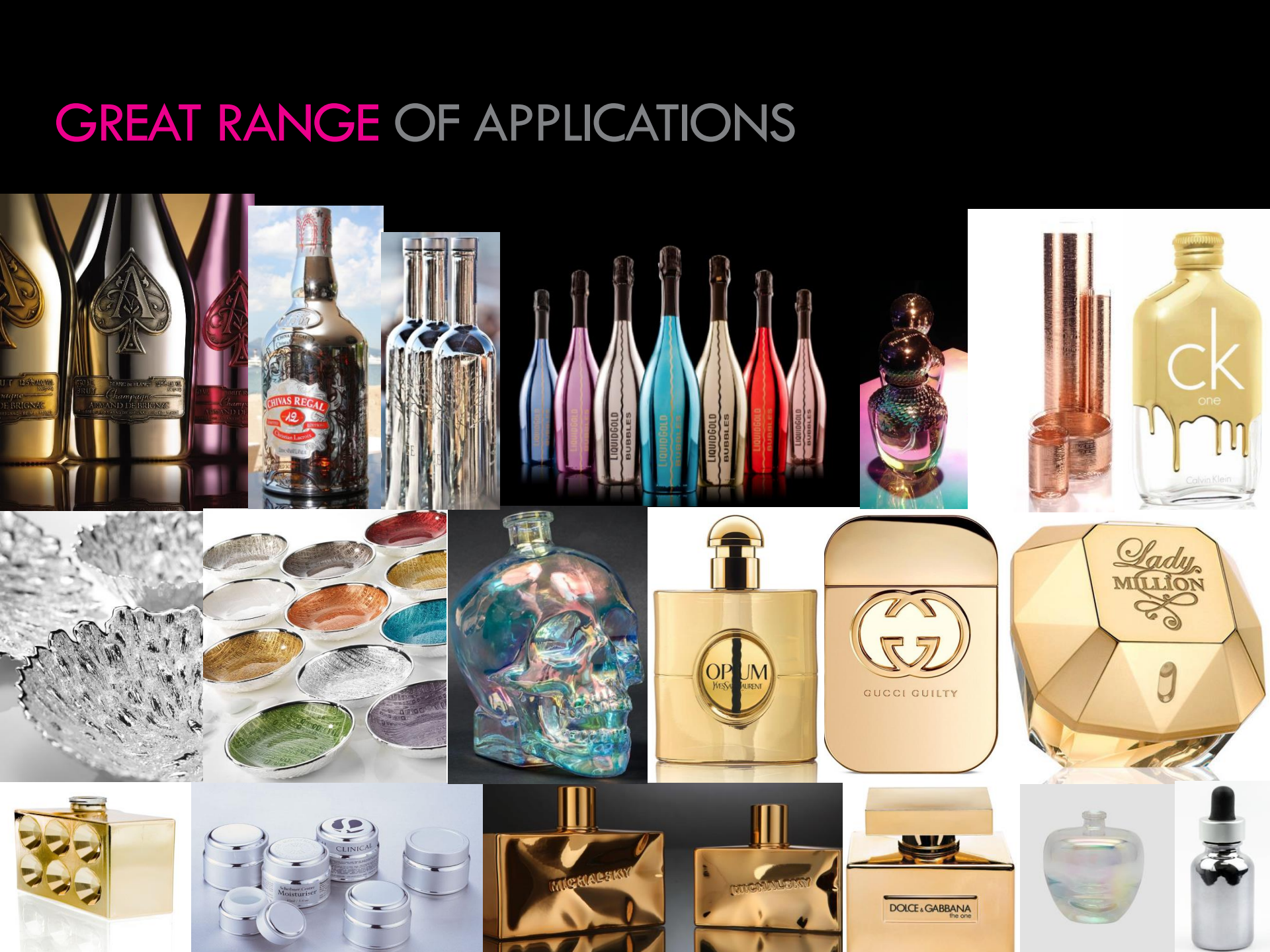
76	12	912
QTY/JIG	JIG	QTY/CYCLE



60	6	360
QTY/JIG	JIG	QTY/CYCLE

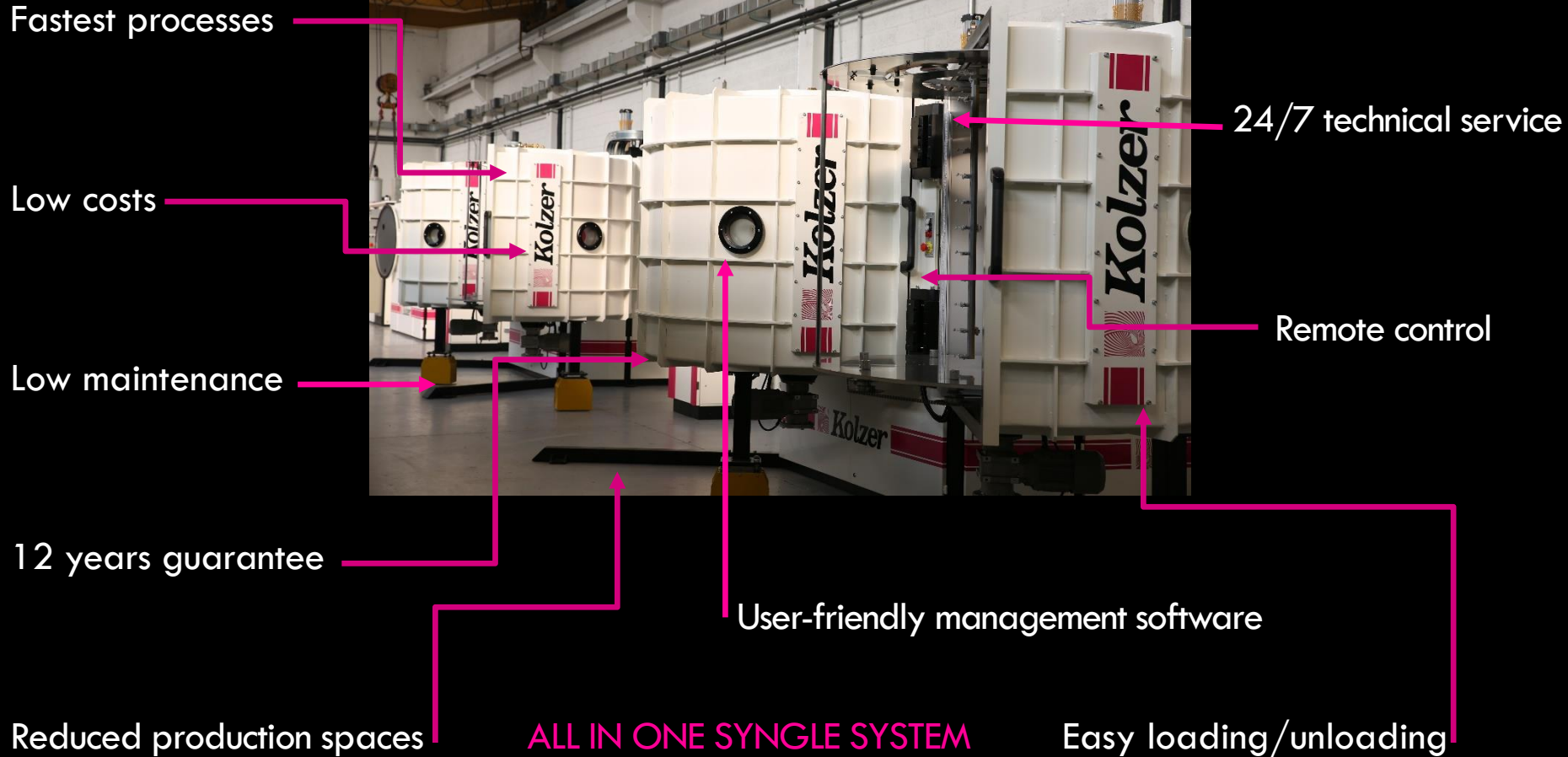


GREAT RANGE OF APPLICATIONS

A collage of 15 images showcasing various cosmetic and perfume packaging designs. The images include: 1. A row of champagne bottles with different labels and foil. 2. A bottle of Chivas Regal 12. 3. A row of bottles labeled 'LIQUIDGOLD BUBBLES' in various colors. 4. A bottle of 'ck one' by Calvin Klein. 5. A close-up of a textured, metallic-looking surface. 6. A collection of small, round, metallic containers in various colors. 7. A bottle of 'OPUM' by Yves Laurent. 8. A bottle of 'GUCCI GUILTY'. 9. A bottle of 'Lady MILLION'. 10. A bottle of 'MICHALESKY'. 11. A bottle of 'DOLCE & GABBANA the one'. 12. A bottle of 'CLINICAL Moisturiser'. 13. A bottle of 'MICHALESKY'. 14. A bottle of 'DOLCE & GABBANA the one'. 15. A bottle of 'MICHALESKY' and a bottle of 'DOLCE & GABBANA the one'.



KOLZER MK63 MOST SOLD SYSTEM FOR GLASS IN THE WORLD



Look how it works!
Made by KOLZER



KOLZER VACUUM COATING MACHINES FOR GLASS



**KOLZER
DGK**



**KOLZER
MK**

KOLZER DGK36"

Coating volume	ø 1000 mm x 1300mm depth
Available Coating Technology	Sputtering, Metallizing, Plasma
Magnetron Sputter sources	1 to 4
Productivity	from 4 minutes cycle time

KOLZER DGK63"

Coating volume	ø 1600 mm x 1750mm depth
Available Coating Technology	Sputtering, Metallizing, Plasma
Magnetron sputter sources	1 to 6
Productivity	from 5 minutes cycle time

KOLZER MK63"

Coating volume	ø 1600 mm x 1450mm
Available Coating Technology	Sputtering, Metallizing, Plasma
Magnetron sputter sources	1 to 6
Productivity	from 5 minutes cycle time

KOLZER DGK48"

Coating volume	ø 1200 mm x 1500mm
Available Coating Technology	Sputtering, Metallizing, Plasma
Magnetron sputter sources	1 to 5
Productivity	from 5 minutes cycle time



The best are working with us,
we create long standing partnership collaborations with our clients,
providing new solutions to the market.



KOLZER SRL

Via Francia, 4
20093 Cologno Monzese (Milan) Italy

T +39 02 25 43 193
info@kolzer.com

www.kolzer.com

